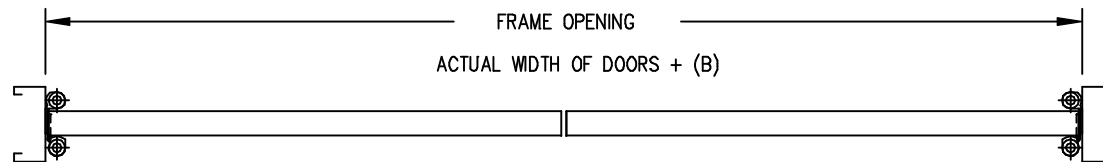


SINGLE DOOR

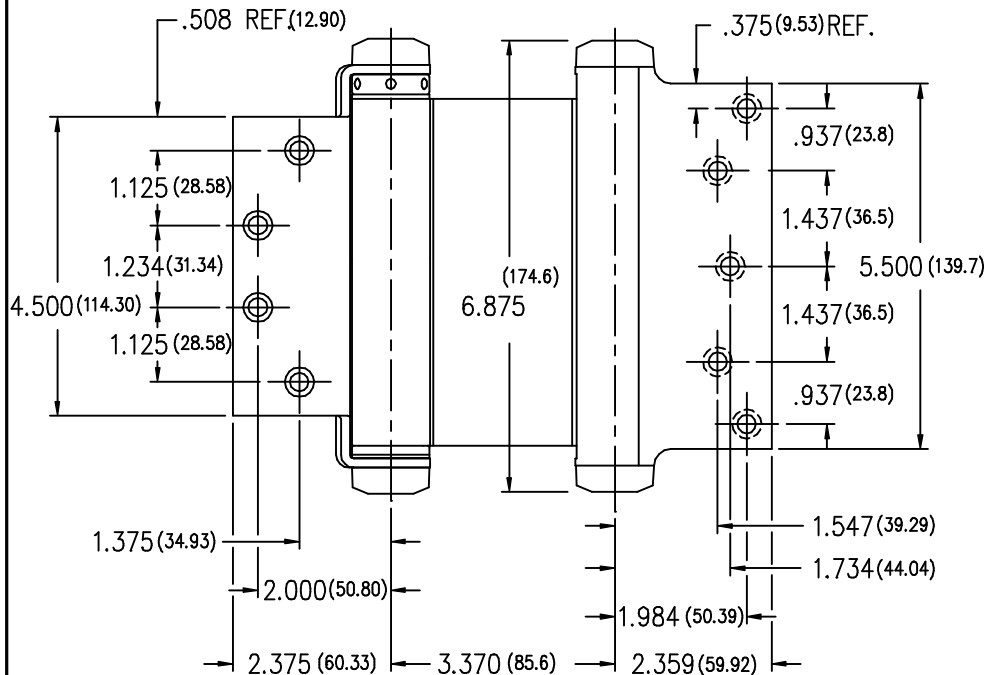
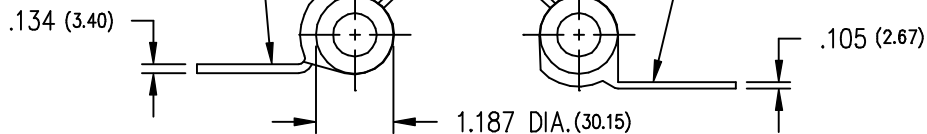


PAIR OF DOORS

THIS IS A CAD DRAWING...  
DO NOT REVISE MANUALLY.

DOOR FLANGE  
.134 MORTISE DEPTH

JAMB FLANGE



VERIFY THAT DRAWING IS CURRENT PRIOR TO USING

FRAME SIZING INFORMATION

HINGE MOUNTING	(A)	(B)
DOOR FLANGE NOT MORTISED	-	-
DOOR FLANGE MORTISED	7/16"	13/16"

---NOTES---

- (1) DO NOT USE ON DOORS WITH HINGE EDGE BEVELED.
- (2) INVERT HINGES ON ONE DOOR OF A PAIR FOR PROPER CENTERING.
- (3) DIMENSIONS IN PARENTHESSES ARE MILLIMETERS.
- (4) MACHINE SCREW 12-24 X 1/2".

**Bommer**

BOMMER INDUSTRIES, INC.  
LANDRUM, SC 29356  
MADE IN THE USA

3029-6 X 4.5  
DOUBLE ACTING SPRING HINGE

DRAWN BY : STEWART JACKSON	DATE	SCALE	DRAWING NUMBER
APPROVED BY :	15 JUL 98	NONE	071598-3029-6X45T
PLOT DATE : 15 JUL 98			